



**Audio System Upgrade Package  
2005-2007 Chrysler 300C  
Installation Instructions**

**TOOLS REQUIRED:**

**\*Phillips Screwdriver \*10mm Nut Driver \*10mm Socket \*Ratchet \*Three Inch Putty Knife  
\*Panel Removal Tool \*10mm Wrench**

**CONTENTS:**

<b>1EA. SUBWOOFER ASSEMBLY</b>	<b>P/N 05290522AB</b>
<b>1EA. 100 WATT AMP ASSEMBLY</b>	<b>P/N 05290521AA</b>
<b>1EA. WIRE HARNESS</b>	<b>P/N RH050300CSUBM</b>
<b>1EA. M6 BOLT</b>	<b>P/N RFM6</b>
<b>1EA. BODY CLIP</b>	<b>P/N 06508613AA</b>
<b>1EA. INSTRUCTIONS</b>	<b>P/N RBI05MAGSUB</b>
<b>6EA. WIRE TIES</b>	<b>P/N RFZIP6</b>
<b>4EA. #8 SHEET METAL SCREWS</b>	<b>P/N RFS2</b>



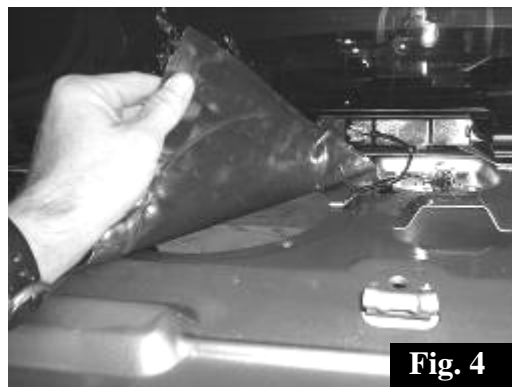


**Audio System Upgrade Package  
2005-2007 Chrysler 300C  
Installation Instructions**

1. Remove the lower rear seat cushion by pulling up on the front edge.
2. Fold rear seat backs into the down position.
3. Remove the 10mm bolt securing the side portions of the seat. Fig. 1
4. Release the spring clip on the back of the side cushion. Insert a putty knife behind the side cushion and push down firmly while pulling forward on the cushion. Fig. 2



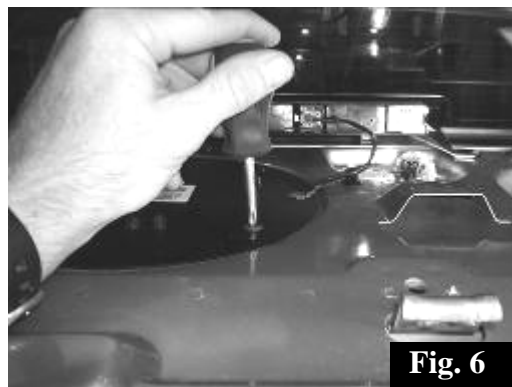
5. To remove the rear package tray, first remove the plastic retainer in the center. Remove the package tray by pulling it away from the rear glass. Fig. 3
6. If the car is equipped with a eight speaker Boston Acoustics® system find the subwoofer mounted in the rear deck and remove the four screws securing it in place. Save the screws for reinstallation later.
7. If the car is not equipped with the Boston Acoustics® system the hole will be covered by a self-adhesive sound damping material. Remove the damping material and save for reinstallation later. Fig. 4



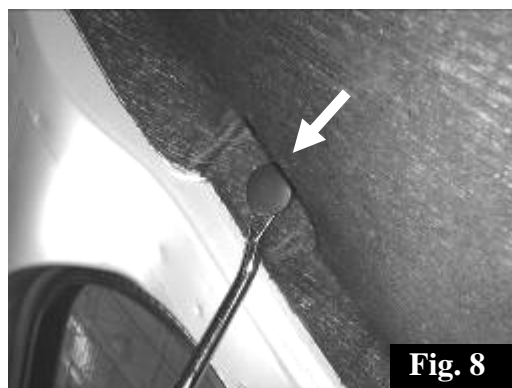
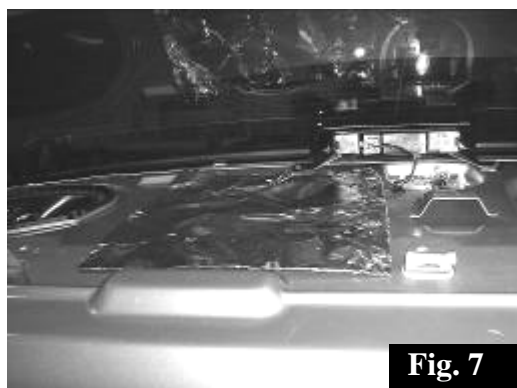


**Audio System Upgrade Package  
2005-2007 Chrysler 300C  
Installation Instructions**

8. Install the amplifier assembly in the hole in the rear deck. Fig. 5
9. Secure the amplifier assembly using the previously removed screws. Screws (#8 sheet metal) are provided for cars not equipped with the factory subwoofer. Fig. 6



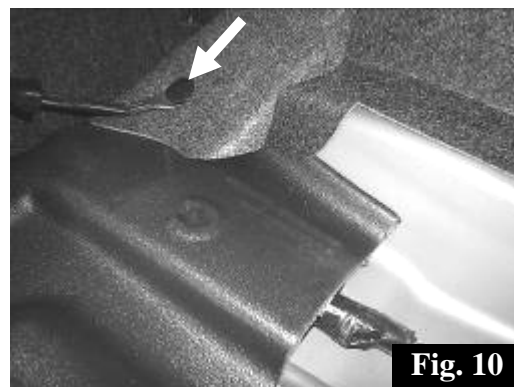
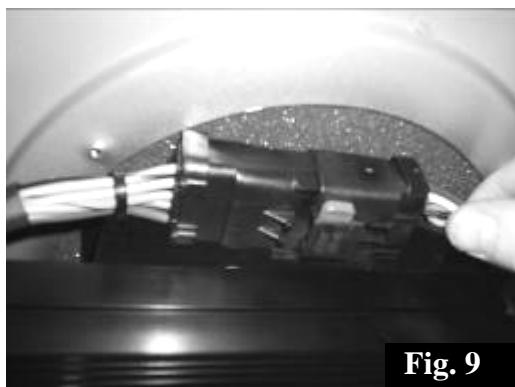
10. Replace the sound damping material (if so equipped) over the amplifier assembly. Fig. 7
11. Remove the six plastic retainers securing the large panel directly below the package tray and remove the panel from the trunk. Fig. 8



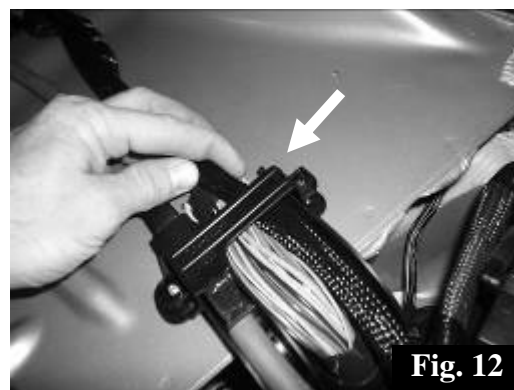
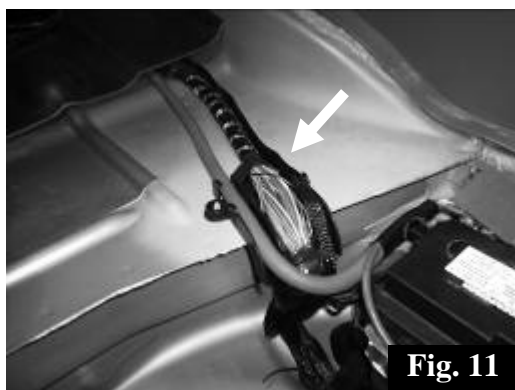


**Audio System Upgrade Package  
2005-2007 Chrysler 300C  
Installation Instructions**

- 12. Plug the six pin connector of the wire harness into the amplifier. Fig. 9**
- 13. Remove the plastic retainer securing the right side of the trunk liner to the floor to allow for wire routing. Fig. 10**



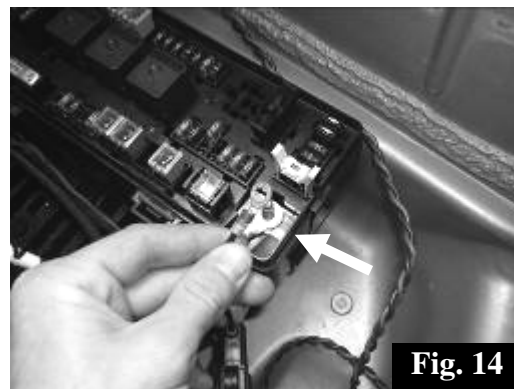
- 14. Route the power and ground portion of the wire harness down the right side of the rear seat pass through and toward the battery along side the factory wiring using the supplied wire ties where needed. Fig. 11**
- 15. Secure the harness with the factory retaining bracket. Fig. 12**



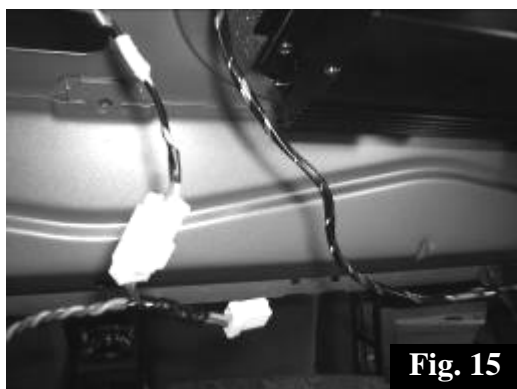


**Audio System Upgrade Package  
2005-2007 Chrysler 300C  
Installation Instructions**

- 16. Connect the ground wire to the body of the car at the factory ground point between the fuse box and the battery. Fig. 13**
- 17. Connect the power wire to the fuse box main lug. Fig. 14**



- 18. If the car is equipped with the eight speaker Boston Acoustics® system, connect the white male speaker connector into the white female connector of the wire harness. Fig. 15**
- 19. On all other cars disconnect the left rear speaker connector. Plug the white male speaker connector into the white female connector of the wire harness. Plug the white male connector back into the speaker. Fig. 16**

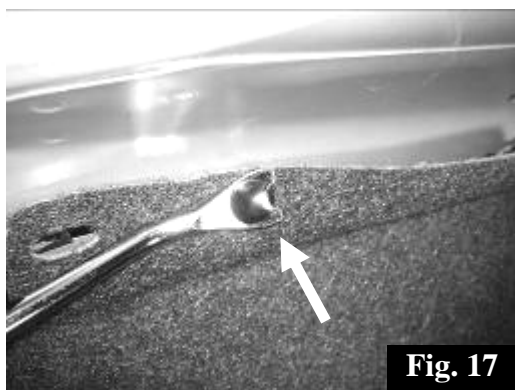




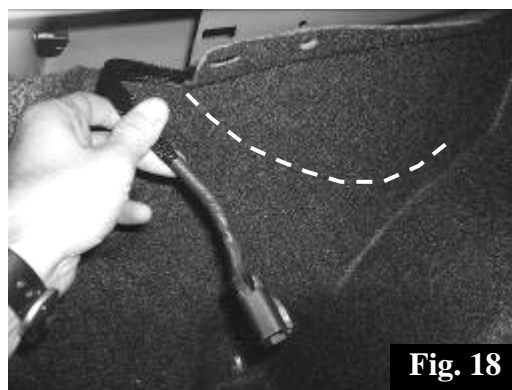


**Audio System Upgrade Package  
2005-2007 Chrysler 300C  
Installation Instructions**

20. You will need to remove the plastic fastener in order to correctly position the wire harness. It is not necessary to reinstall this fastener. Fig. 17
21. Route the speaker output portion of the harness toward the left rear fender well and back to the subwoofer mounting location. The wire harness needs to route low enough that it will not be pinched by the subwoofer mounting bracket. Fig. 18



**Fig. 17**



**Fig. 18**

22. Install the speed clip that is provided onto the sheet metal just behind the left rear fender well. Fig. 19
23. Remove the bag from the subwoofer assembly and lay it in the corner of the trunk where the subwoofer assembly will be placed. The purpose of the bag is to prevent the Velcro® mounting system on the bottom of the subwoofer assembly from engaging the carpet prematurely. Fig. 20



**Fig. 19**



**Fig. 20**



**Audio System Upgrade Package  
2005-2007 Chrysler 300C  
Installation Instructions**

24. Set the subwoofer assembly in place, install the M6 bolt and tighten. Fig. 21
25. Connect the two pin connector of the wire harness to the subwoofer assembly.
26. Connect the subwoofer wiring harness to the subwoofer assembly. Fig. 22
27. Apply moderate pressure to the front of the enclosure while pulling the bag out from under it. Fig. 22
28. Reinstall all previously removed parts in reverse order.

