



NUMBER: 24-008-07

GROUP: Heating & A/C

DATE: December 18, 2007

This bulletin is supplied as technical information only and is not an authorization for repair. No part of this publication may be reproduced, stored in a retrieval system, or transmitted, in any form or by any means, electronic, mechanical, photocopying, or otherwise, without written permission of Chrysler LLC.

THIS BULLETIN IS BEING PROVIDED IN ADVANCE. DO NOT ORDER PARTS OR PERFORM ANY ACTIONS RELATED TO THIS BULLETIN UNTIL JANUARY 15, 2008.

SUBJECT:

A/C Cut Out At High Speeds Of 180 kph (111 mph)

OVERVIEW:

This bulletin involves installing an air deflector on the Charge Air Cooler (CAC) and replacing the front belly pan.

MODELS:

2006 - 2008 (LE)

300C/300C Touring (International Markets)

NOTE: This bulletin applies to vehicles equipped with a 3.0L Diesel engine only (sales code EXL).

SYMPTOM/CONDITION:

The vehicle operator may experience A/C cut out at high speeds. This condition occurs when the vehicle speed exceeds 180 kph (111 mph). Concentrated heat from the Charge Air Cooler will vaporize the liquid in the condenser. This reduces pumping efficiency of the A/C compressor which disables the vehicles A/C system.

DIAGNOSIS:

If the vehicle operator experiences the Symptom/Condition, perform the Repair Procedure.

PARTS REQUIRED:

Qty.	Part No.	Description
1	68044523AA	Front Fascia Kit, A/C Package Kit Contains: 68044841AA Front Fascia Panel (Belly Pan) 68044839AA Air Dam (Deflector) 68044838AA Attaching Clip 68044835AA Push Pin

REPAIR PROCEDURE:

1. Turn the ignition OFF.
2. Disconnect and isolate the negative battery cable
3. Lift and support the vehicle using a suitable hoist.

4. Remove both front tires.
5. Remove the three push-pin retainers that secure each front wheel house splash shield to the front fascia assembly ([Fig. 1](#)).

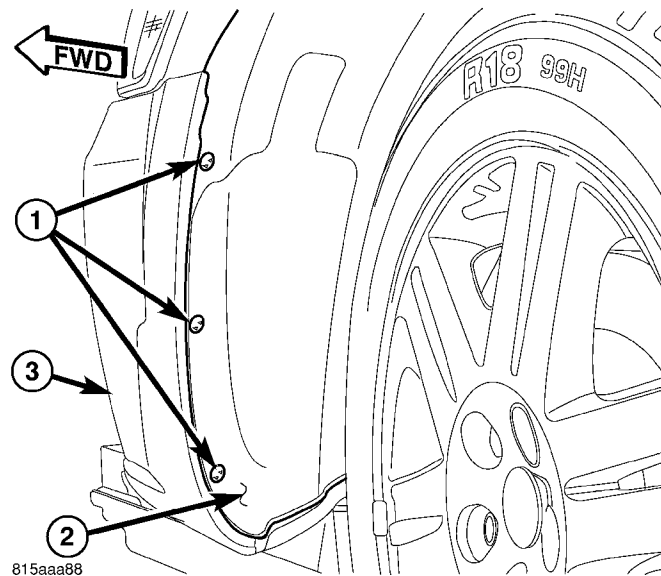


Fig. 1 WHEEL HOUSE (Left shown, right similar)

- 1 - PUSH PINS (3) THAT SECURE WHEEL HOUSE TO FASCIA
- 2 - WHEEL HOUSE
- 3 - FASCIA ASSEMBLY

-
6. Remove the nine screws that secure the belly pan to the underbody ([Fig. 2](#)).

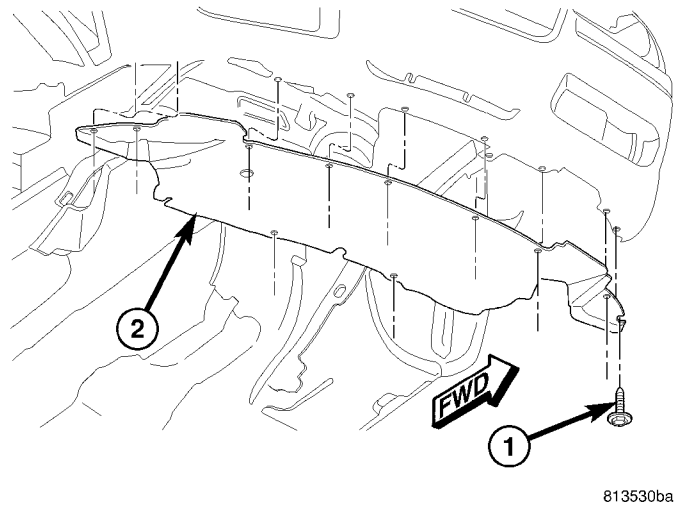


Fig. 2 BELLY PAN

1 - SCREWS (9) THROUGH BELLY PAN

2 - BELLY PAN

-
7. Remove the screws that secures the front fascia assembly to the nut insert in each front fender ([Fig. 3](#)).
 8. Partially lower the vehicle and remove the push-pin retainers (four) that secure the front fascia assembly to the upper radiator support ([Fig. 3](#)).

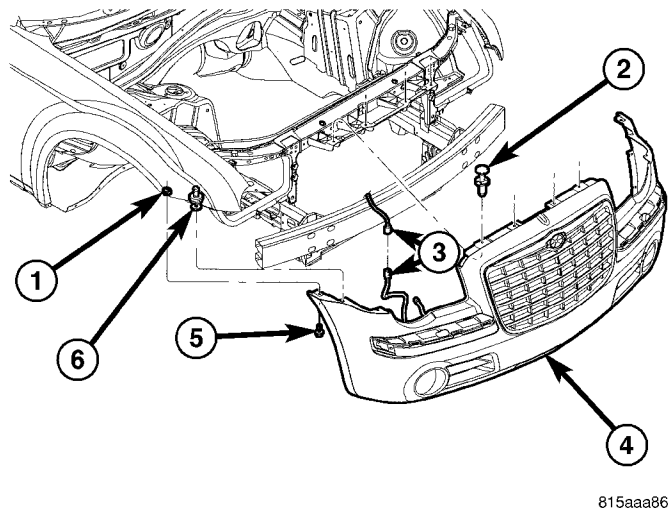
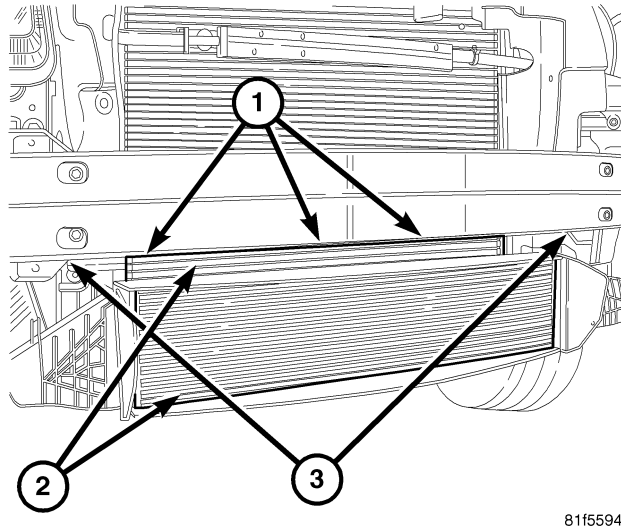


Fig. 3 FASCIA

- 1 - NUT INSERT IN EACH FENDER
- 2 - PUSH PIN RETAINERS
- 3 - WIRE HARNESS CONNECTOR
- 4 - FASCIA
- 5 - SCREWS, FASCIA TO FENDER
- 6 - PUSH PIN RETAINERS

-
9. If equipped, disconnect the headlamp washer system hose from washer reservoir. Plug outlet of reservoir.
 10. Carefully pull the front fascia assembly forward to disengage the push-pin retainer from the slot in each side the fascia.
 11. Set the fascia aside on a protected surface.
 12. Using chalk or grease pencil, mark a line on the condenser even with the top of the charge air cooler (CAC) for future reference ([Fig. 4](#)).



81f5594b

Fig. 4 CHARGE AIR COOLER

- 1 - MARK THE TOP OF THE CAC ON THE CONDENSER
- 2 - UPPER AND LOWER PLASTIC SHROUDS ON CAC
- 3 - CAC UPPER ATTACHING BOLTS

-
13. Remove attaching bolts at the ends of the CAC (no need to disconnect inlet and outlet hoses) (Fig. 4).
 14. Remove CAC from mounting flanges by lifting and rolling top forward. Let CAC hang below.
 15. Remove and discard the upper and lower plastic shrouds from the CAC (Fig. 4).
 16. Install double ended mounting clips p/n 68044838AA at both sides of the condenser in the 2nd row of tubes from the bottom (Fig. 5).

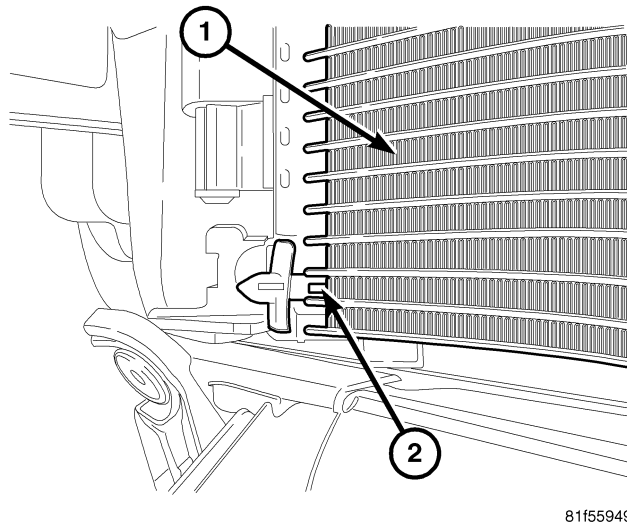


Fig. 5 CLIP INSTALLATION

1 - CONDENSER

2 - INSERT LONG CLIP LEGS INTO 2nd ROW FROM BOTTOM OF CONDENSER AT EACH END

17. Install deflector p/n 68044839AA on the clips on the condenser ([Fig. 6](#)).

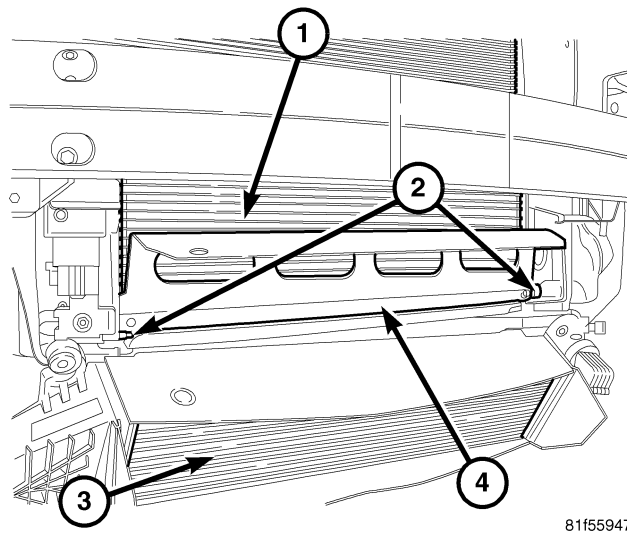


Fig. 6 DEFLECTOR INSTALLATION

1 - MARK ON CONDENSER FROM STEP #12

2 - CLIP DEFLECTOR AS SHOWN ONTO PROTRUDING STUDS

3 - CAC IN HANGING POSITION

4 - DEFLECTOR

18. Ensure lower rubber isolators are in place on CAC and install CAC in the lower mounts.
19. Install two push pins p/n 68044835AA through the DEFLECTOR into the top of the CAC.
20. Install two mounting bolts in CAC.
21. Reversing procedures above, Install fascia and front tires.
22. Install replacement belly pan p/n 68044841AA.

POLICY:

Reimbursable within the provisions of the warranty.

TIME ALLOWANCE:

Labor Operation No:	Description	Amount
24-45-05-90	Install Charge Air Cooler Air Deflector and Replace Belly Pan (B)	1.0 Hrs.

FAILURE CODE:

ZZ	Service Action
----	----------------